



# General description of the needs assessment of inhabitants in informal settlements in Nairobi

- **General project description:** A questionnaire was prepared with more than 30 questions. Inhabitants of informal settlements in Nairobi were interviewed by ETA's staffs and associates to identify their needs for better energy supply and waste-related solutions.
- **Preparatory phase of this assessment:** September 2011 – March 2012
- **Duration of field survey:** April 2012 – August 2012
- **Project area:** Ten slum areas in Nairobi (see the map attached)
- **Sample numbers :** Over 200 samples

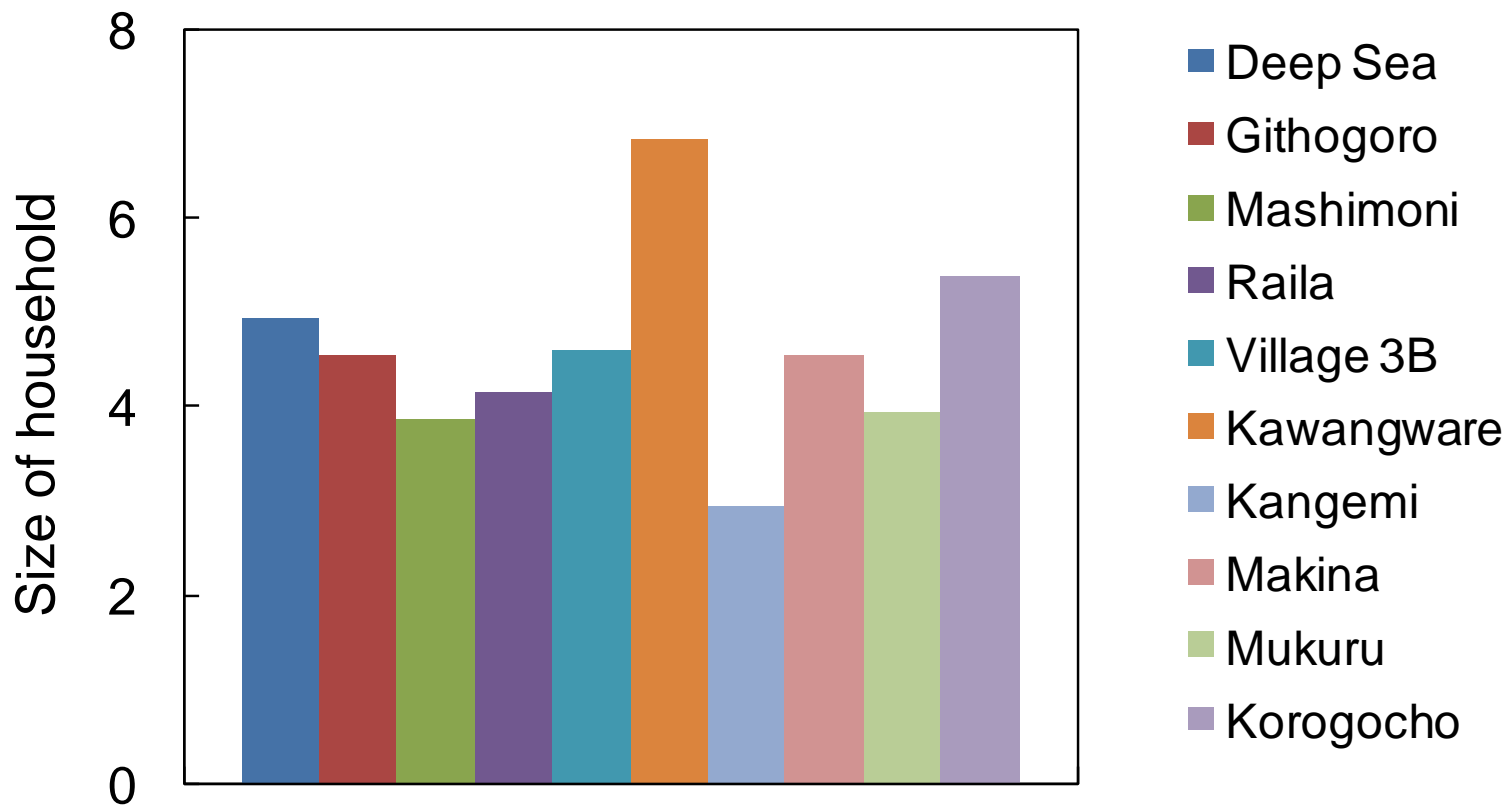


# Selected results of the needs assessment

(Sample #: Over 200)



## Size of household (average)

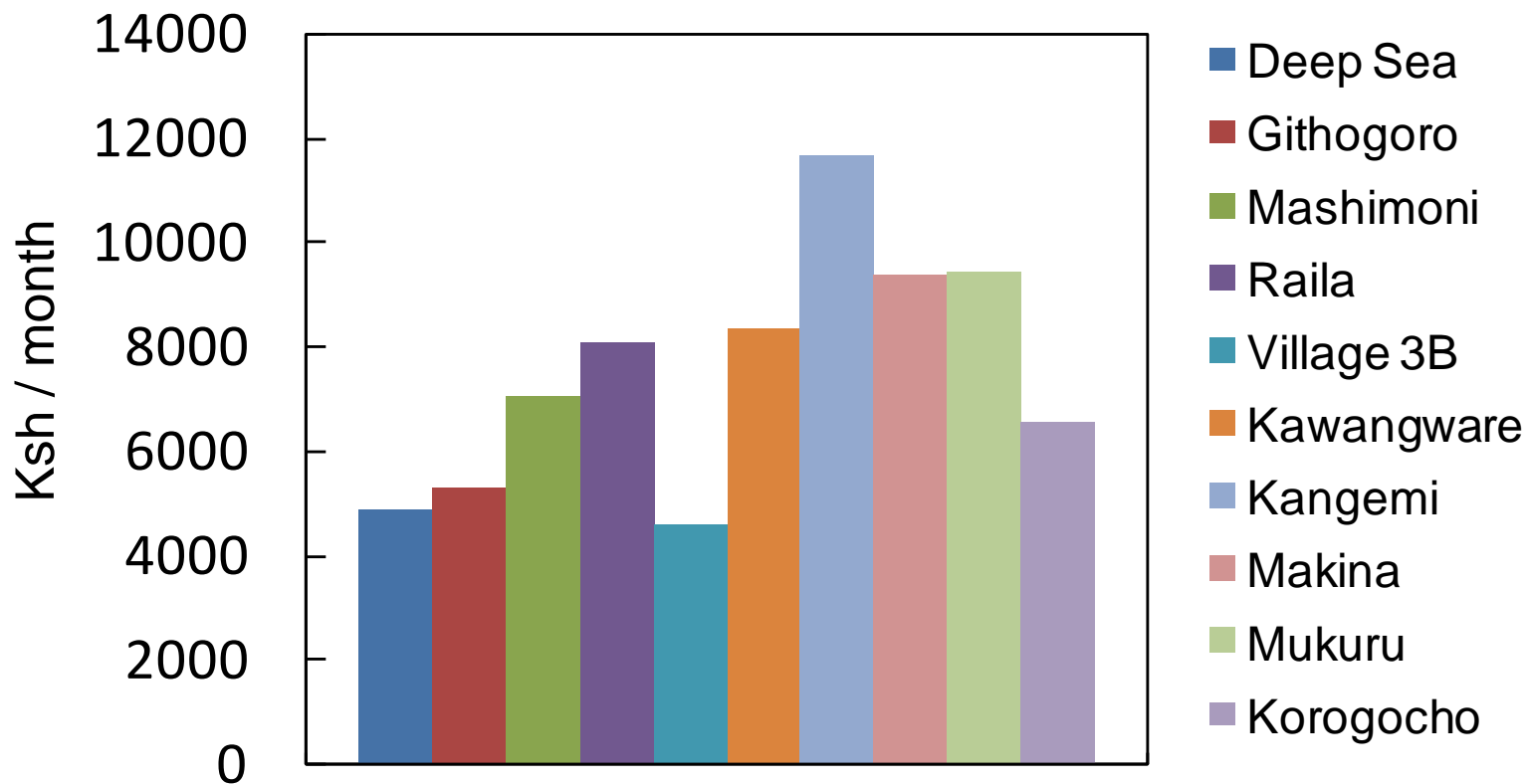


# Selected results of the needs assessment

(Sample #: Over 200)

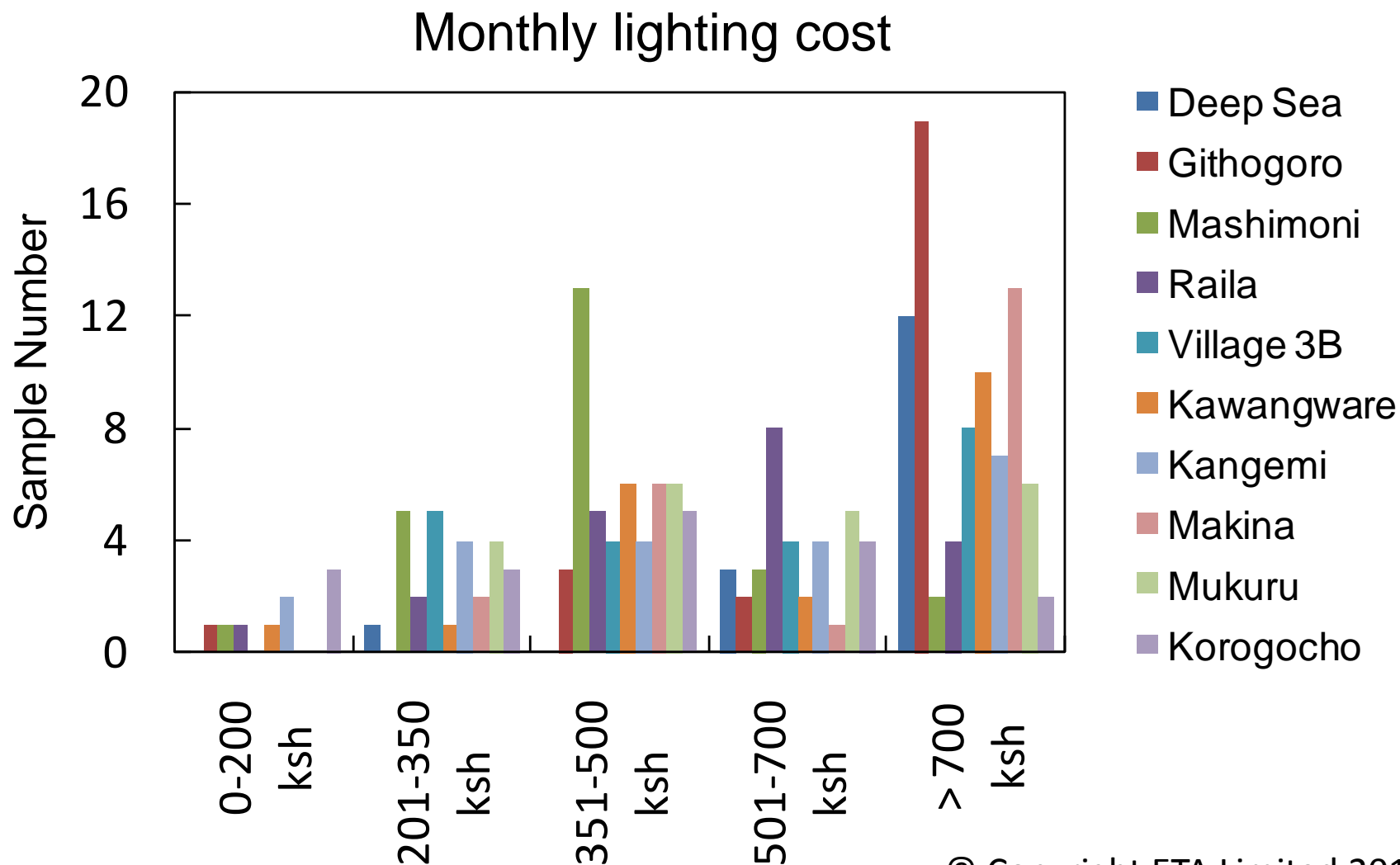


## Monthly income (average)



# Selected results of the needs assessment

(Sample #: Over 200)

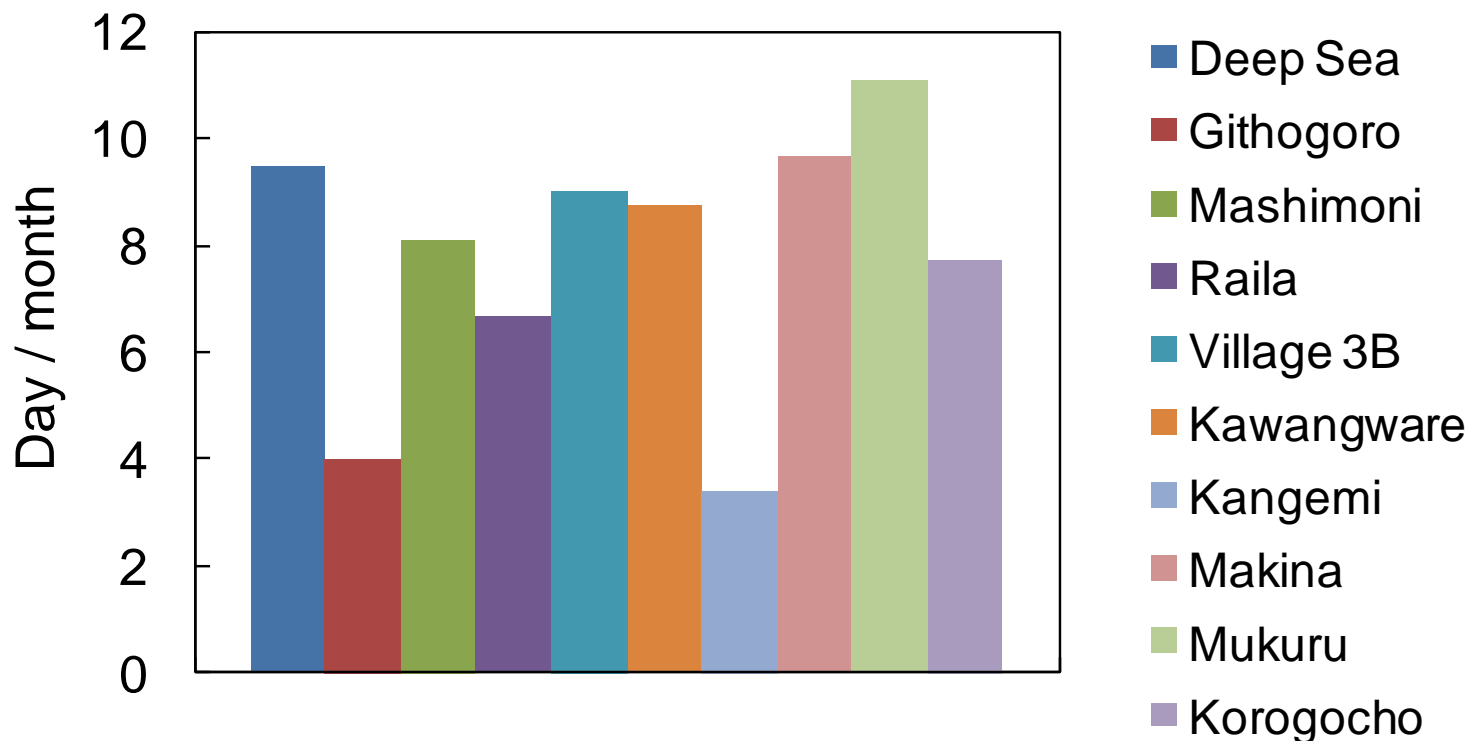


# Selected results of the needs assessment

(Sample #: Over 200)



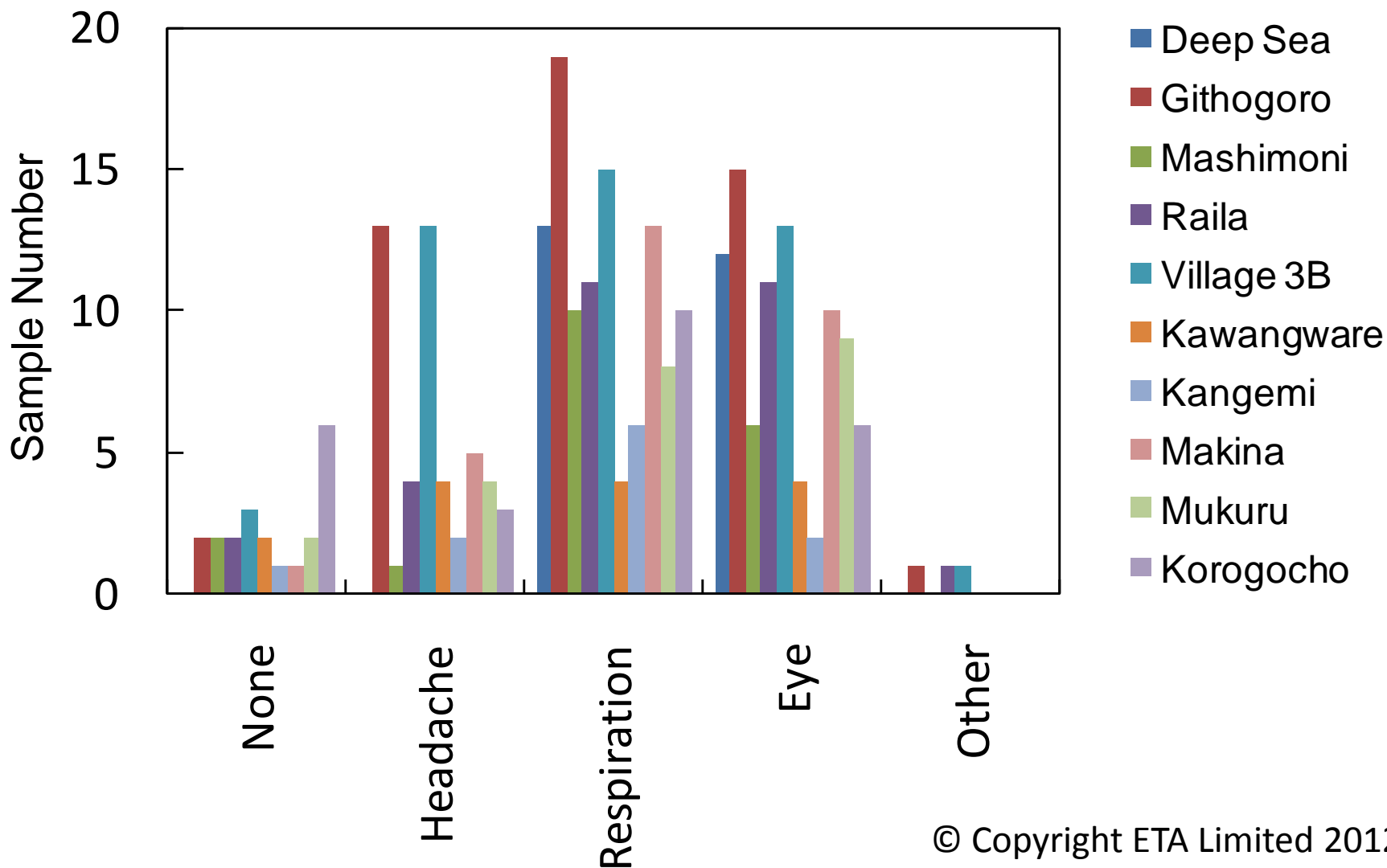
## Power shortage frequency



# Selected results of the needs assessment (Sample #: Over 200)



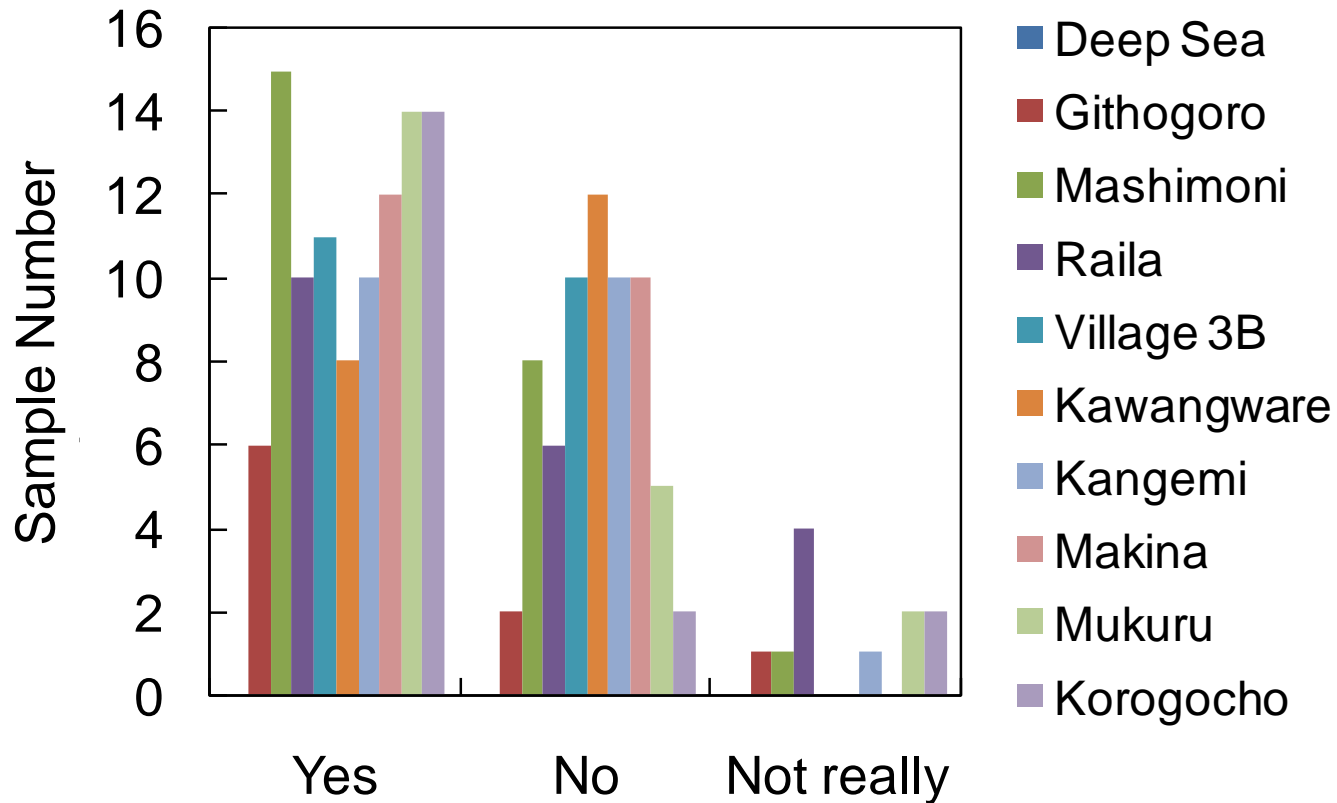
## Health issues due to kerosene



# Selected results of the needs assessment (Sample #: Over 200)



## Knowing difference between recyclables and wastes

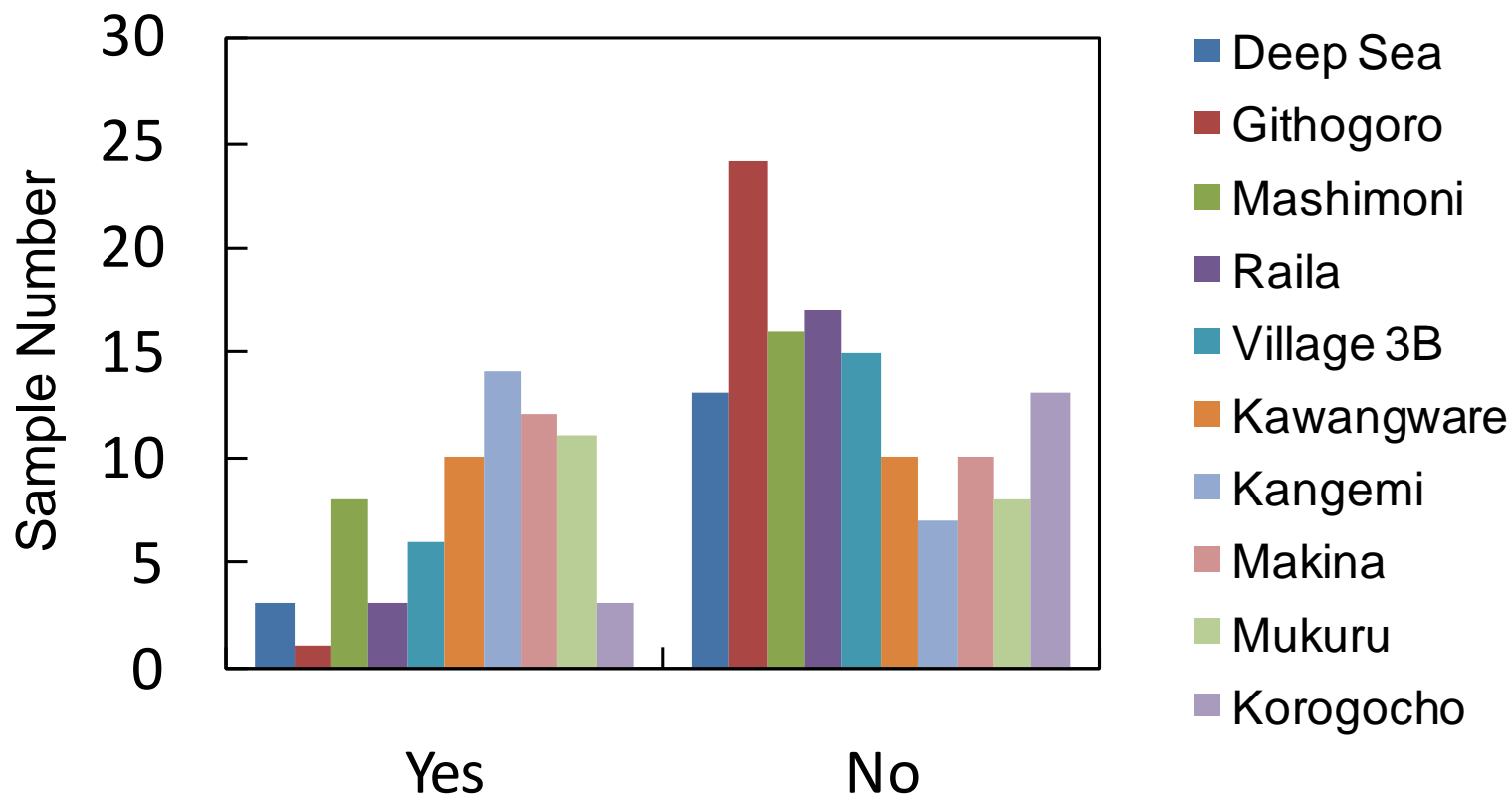


# Selected results of the needs assessment

(Sample #: Over 200)



## Sorting recyclables from wastes at home



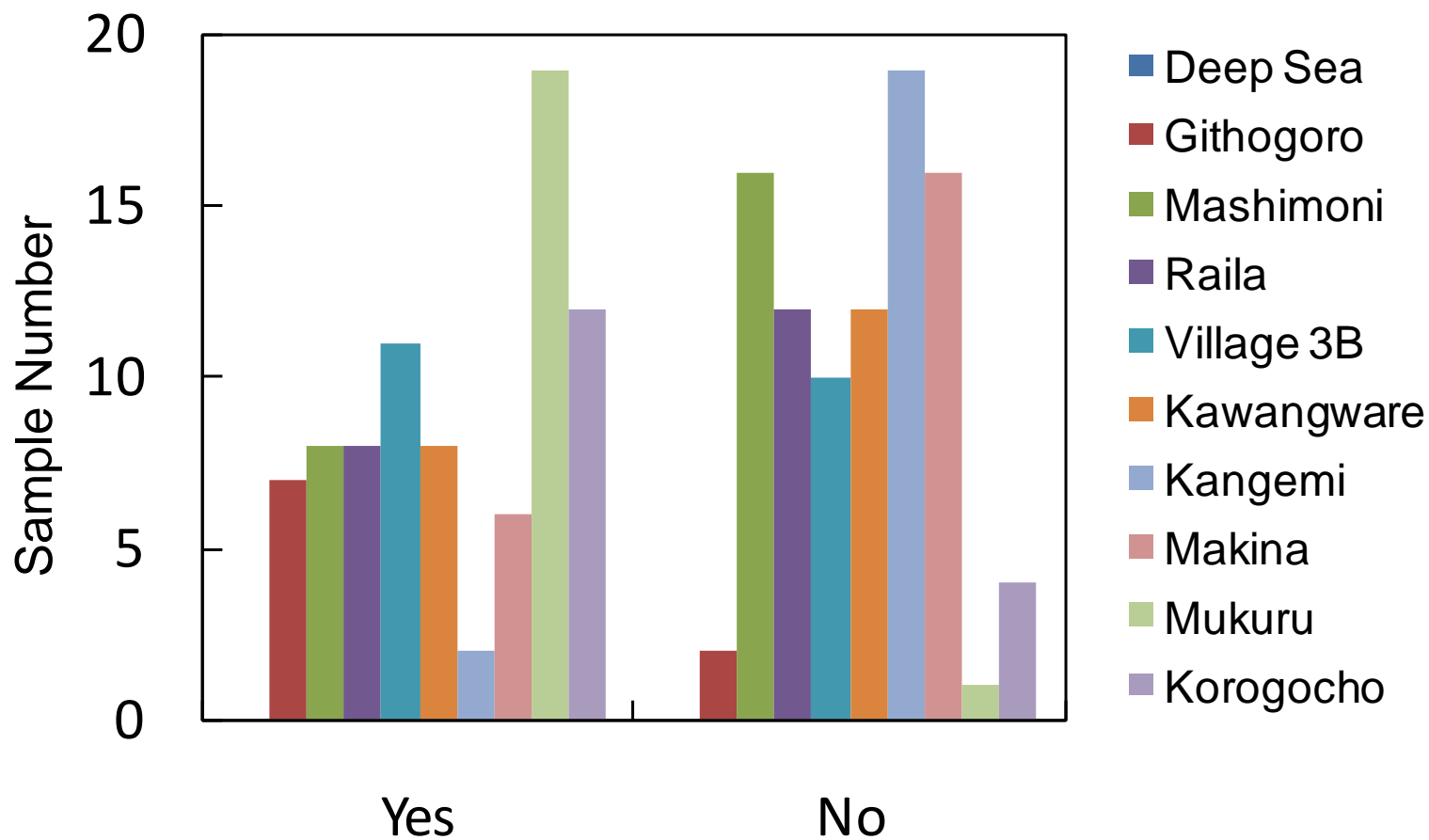


# Selected results of the needs assessment

(Sample #: Over 200)



## Taking waste to a certain collection place in the slum

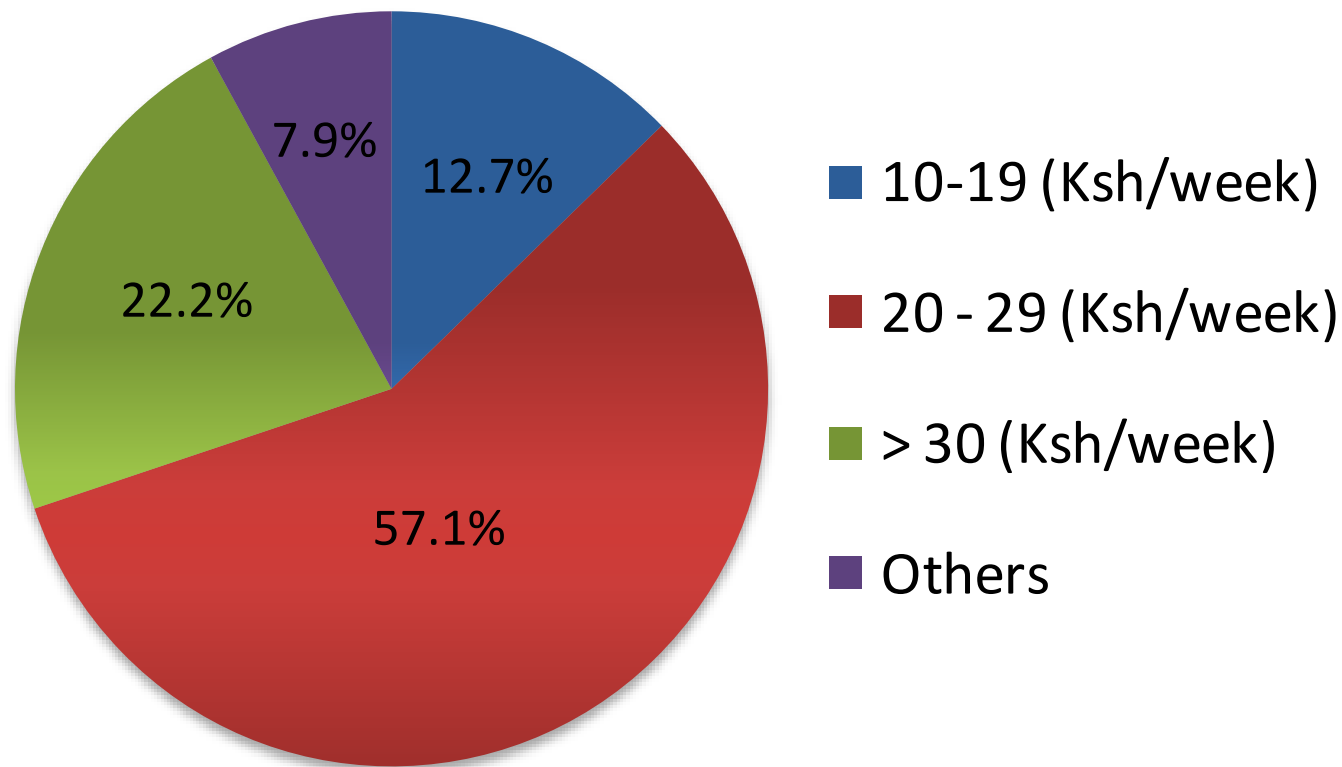


# Selected results of the needs assessment

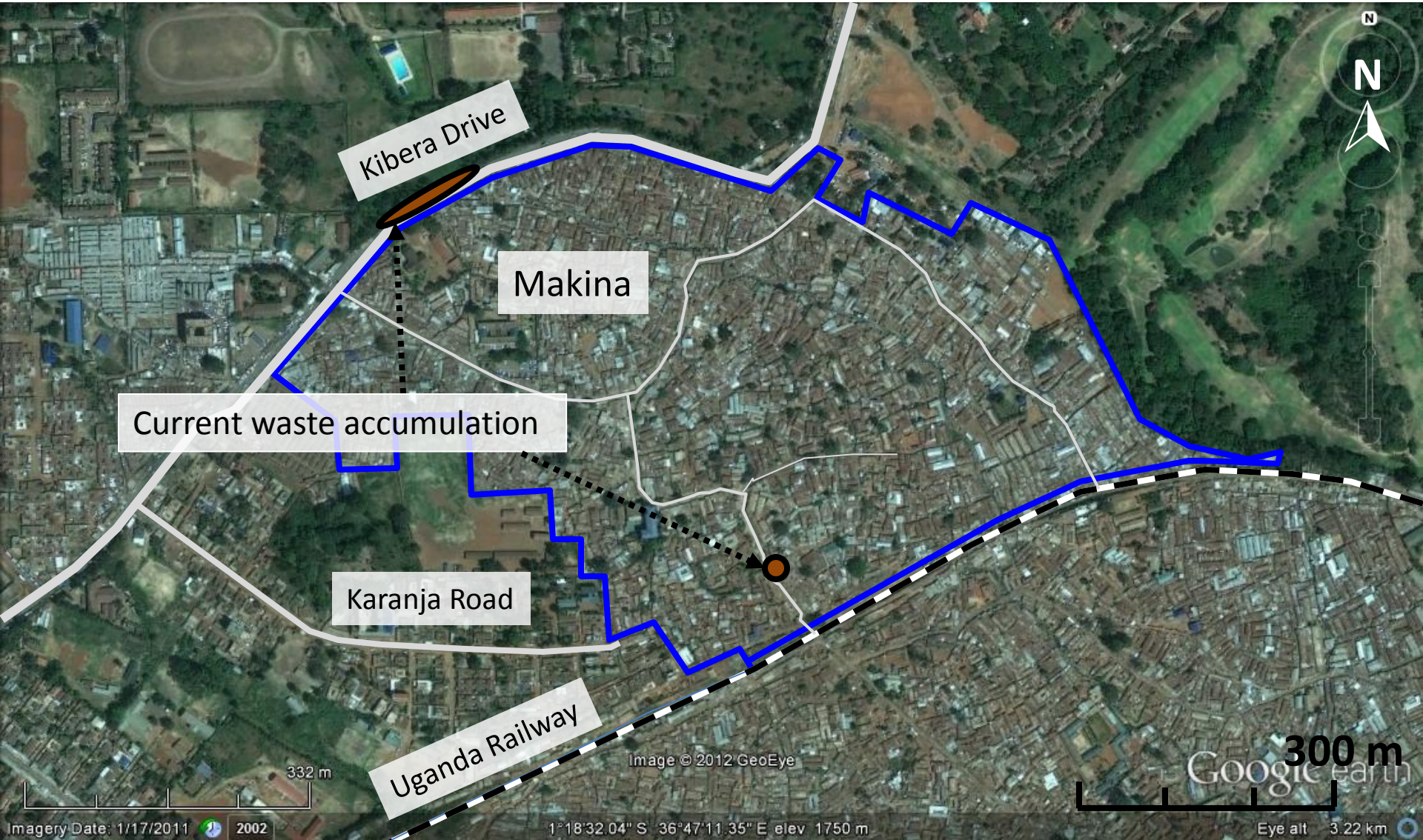
(Sample #: Over 200)



Weekly fee for waste collection services paid by slum residents  
(per household: data mixed from all 10 slum areas)



# Example of illegal waste dumping locations



Aerial photo of survey area, Makina, Kibera Slum